



EXCERA
Innovate to Succeed

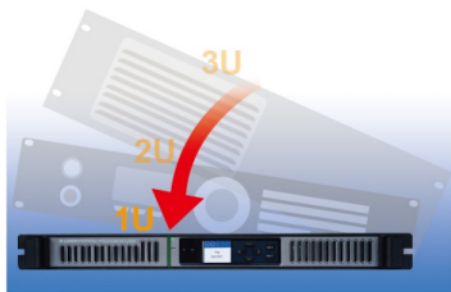
DMR Basestation Repeater ER9000

- ◆ 19 Inches, 1U Cabinet Size Design with Power Supply Inside
- ◆ 100% Continuous Duty Cycle with 50W High Power Output
- ◆ Mixed Mode Multi-site IP Connect to Support Digital and Analog Repeaters
- ◆ DMRA AIS Application Successful Solution
- ◆ Upgrade to DMR Trunking and Simulcast Basestation Transceiver

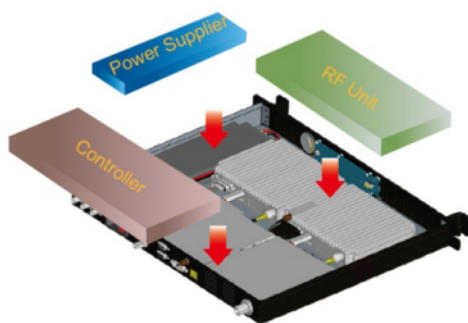


Advantage Features

19 inches, 1U standard cabinet size design with power supply inside.



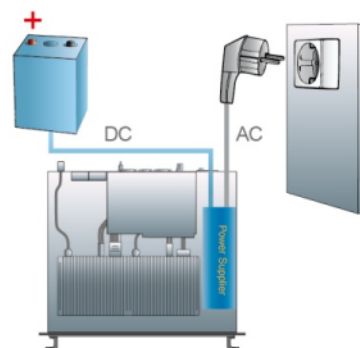
100000 hours MTBF performance based on military modular design with high reliability.



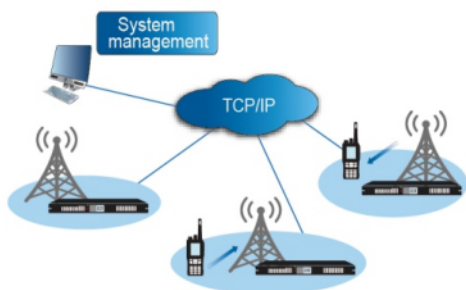
Unique 100% duty cycle at 50W high power output in 1U cabinet.



Supports AC/DC power supply and switches to the backup battery automatically when AC power is interrupted with the built-in float circuit design.



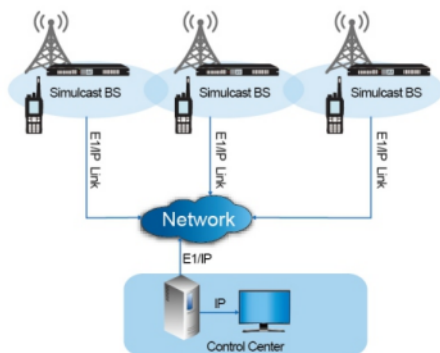
The unique designed mixed mode multi-site IP connect to support digital and analog repeaters up to 64 sites which allows wide area coverage and cross bands communication.



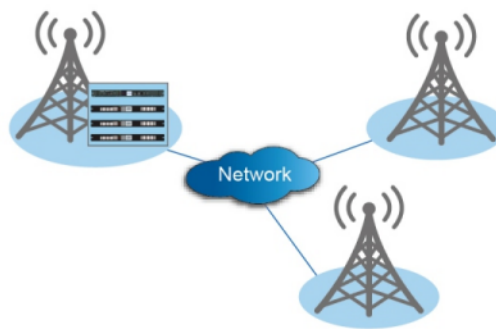
Supports remote diagnosis, maintenance and software upgrade.



Can be upgraded to DMR Tier II simulcast basestation transceiver by software license.

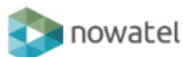


Can be upgraded to Excera Easy Trunk basestation transceiver or DMR Tier III basestation transceiver by software license.



Advantage Features

DMRA AIS Application Solutions and Partners.



<http://www.nowatel.com/>



<http://www.safemobile.com>



<http://www.awcs.com>



<http://omnitronicsworld.com>

Accessories

				
AC Power Cable EPWCDZ01 (Standard Accessories)	Duplexer EDU001/ EDU002/ EDU003 (Optional Accessories)	Power Cord EPWCAZ01 (Optional Accessories)	Programming Cable EPC03 (Optional Accessories)	Fuse EACC001 (Optional Accessories)

Excera retains right to change the products design and specification without prior notice. Parts supply for the market is different, please contact the local dealer. Promotional photos are for reference only . All products as per the material subjects.

Specifications

General

Frequency Range	VHF: 136-174MHz UHF1: 400-470MHz UHF2: 450-520MHz UHF3: 350-400MHz UHF4: 300-360MHz UHF5: 806-825MHz 851-870MHz 896-902MHz 935-941MHz
Channel Capacity	128
Channel Space	12.5 /20/25KHz
Dimensions(H*W*D)	44*483*375mm
Weight	7.6Kg
LCD	1.8 inch TFT LCD 128x160 pixels,262Kcolors
Operating Voltage	DC 13.6V±15% AC 100 - 240VA
Frequency Stability	0.5ppm
Continuous duty Cycle	100%

Transmitter

Frequency Stability	0.5ppm
RF Max. Power Output	VHF: 50W/25W UHF1/UHF2/UHF3/UHF4: 45W/25W UHF5: 35W(800MHz) 30W(900MHz)
Digital Modulation	7K60FXD(Data Only) /7K60FXW(Data and Voice)
FM Modulation	16K \angle F3E@25KHz / 14K \angle F3E@20KHz 11K \angle F3E@12.5KHz
4FSK Modulation Accuracy	5%
4FSK BER	0%
4FSK and Magnitude Error	5%/1%
Adjacent Channel Power	70dB@25/20KHz / 60dB@12.5KHz
Conducted and Radiated Emission	-36dBm <1GHz / -30dBm >1GHz
Transmission Deviation limits	5KHz@25KHz / 4KHz@20KHz /2.5KHz@12.5KHz
Audio Distortion	3%
Hum and Noise	48dB@25KHz / 46dB@20KHz 43dB@12.5KHz
Audio Response	+1 ~ -3dB

Receiver

Digital Sensitivity	-120dBm / BER 5% -116dBm / BER 1%
Digital Dynamic Faded Sensitivity (100KM/H& 8KM/H Rayleigh Fading)	-104dBm
Analog Sensitivity	-120dBm / 12dB SINAD
Intermodulation	75dB (TIA603) / 70dB(ETSI)
Blocking	95dB (TIA603 & ETSI)
Spurious Response Rejection	75dB (TIA603 & ETSI)
Adjacent Channel Selectivity	75dB@25 KHz (TIA603) 70dB@25 KHz (ETSI) 70dB@20KHz (TIA603 & ETSI) 65dB@12.5KHz (TIA603) 60dB@12.5 KHz (ETSI)
Conducted Spurious Emission	-57dBm
Rated Audio Power Output	1W (16 Ω Load)
Rated Audio Distortion	3%
Hum and Noise	48dB @25KHz / 46dB@ 20KHz 43dB@12.5KHz
Audio Response	+1 ~ -3dB
Digital Vocoder Type	AMBE++
Digital Protocol	ETSI-TS102 361 -1, -2,-3,-4

Reliability

Operating Temperature	-30 ~ +60 C
Storage Temperature	-40 ~ +85 C
Shock&Vibration	MIL-STD-810 C/D/E/F/G Standard
ESD	IEC 61000-4-2(level 4) ±8KV(Contact) , ±15KV(Air)
Surge Immunity Test (EN 6100~4~5)	Differential Mode:6KV Common Mode:6KV

